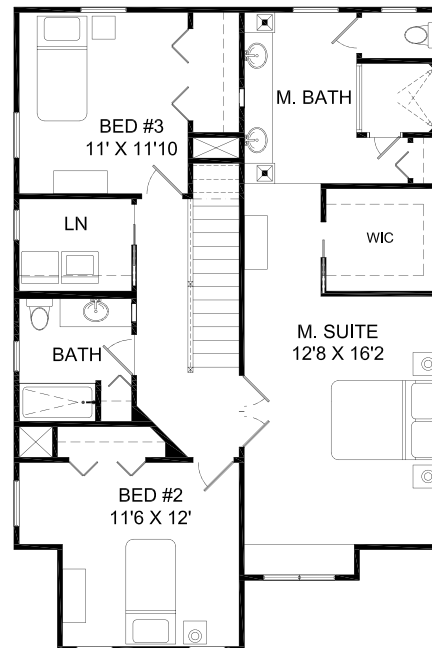
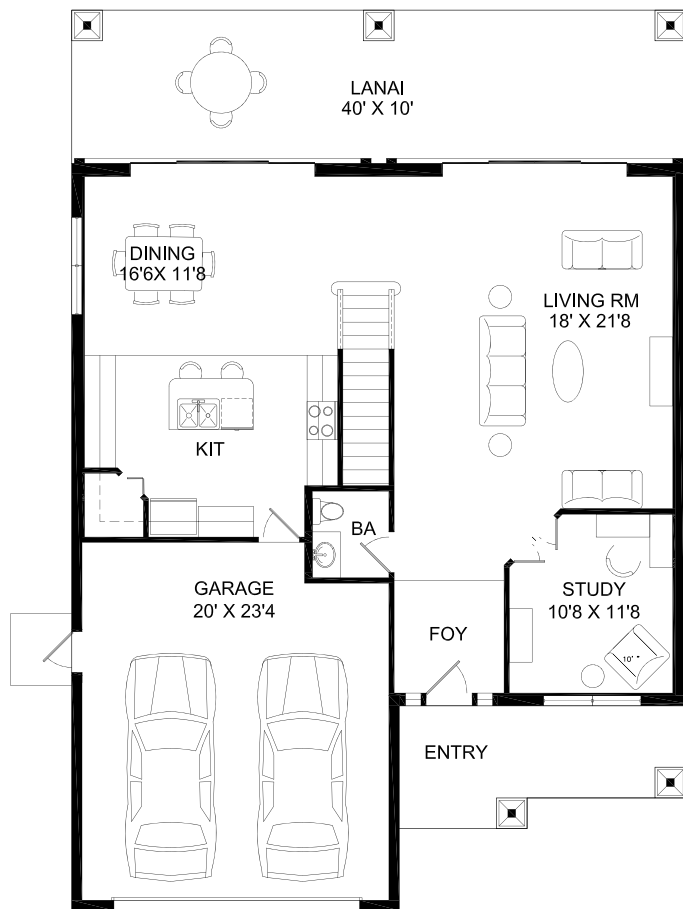


The Jean Marie

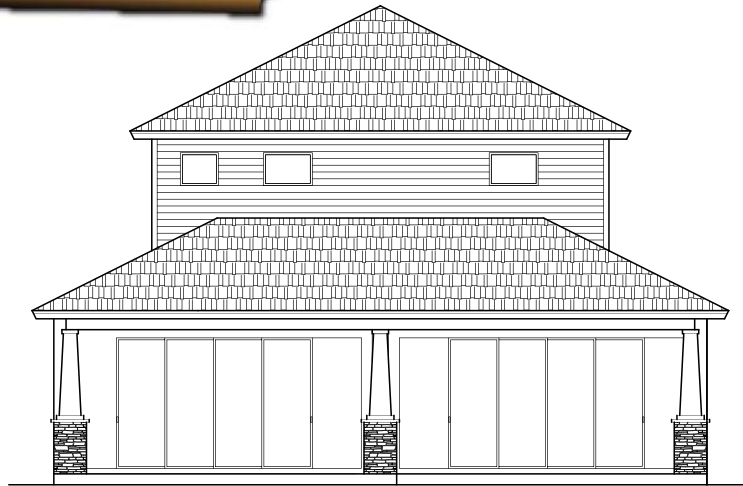
AREA CALCULATION

1ST FLOOR	= 1207 S.F.
SECOND FLOOR	= 1040 S.F.
TOTAL LIVING	= 2247 S.F.
GARAGE	= 490 S.F.
LANAI	= 400 S.F.
F. PORCH	= 129 S.F.
TOTAL AREA	= 3828 S.F.



*Elevation and floorplan are for conceptual use and are subject to change without notice. All Dimensions are approximate. Copyright 2015. Revised 09.03.2015

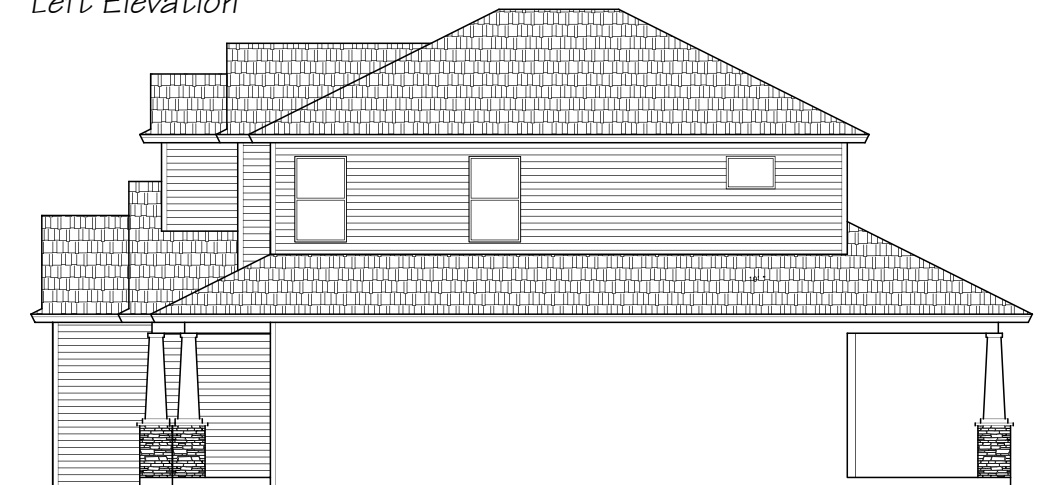
The Jean Marie



Rear Elevation



Left Elevation



Right Elevation

*Elevation and floorplan are for conceptual use and are subject to change without notice. All Dimensions are approximate. Copyright 2015. Revised 09.03.2015